

## Microbore HPLC:

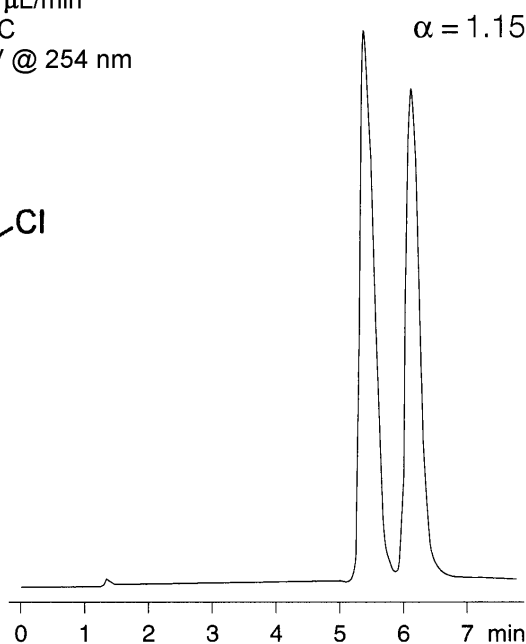
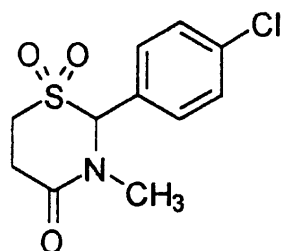
## Kromasil Chiral Separation of Chlormezanone



App No: 101

### Chlormezanone

**Phase:** Kromasil CHI-TMB  
**Dimensions:** 1 x 250 mm  
**Order No.:** S-125-1025  
**Mobile Phase:** Hexane-IPA (85:15)  
**Flow Rate:** 50  $\mu$ L/min  
**Temp.:** 25C  
**Detection:** UV @ 254 nm



### ORDERING INFORMATION: HotSep® Kromasil CHI-TMB 5 $\mu$ , 100Å

ID	5 cm	10 cm	15 cm	25 cm	Guard	Guard/5pk
1.0 mm	S-125-1005	S-125-1010	S-125-1015	S-125-1025	G-125-10-1	G-125-10-5
0.5 mm	S-125-0505	S-125-0510	S-125-0515	S-125-0525	G-125-05-1	G-125-05-5
0.3 mm	S-125-0305	S-125-0310	S-125-0315	S-125-0325	G-125-03-1	G-125-03-5
0.1 mm	---	---	---	---	---	---
75 $\mu$ m	---	---	---	---	---	---