

## Microbore HPLC:

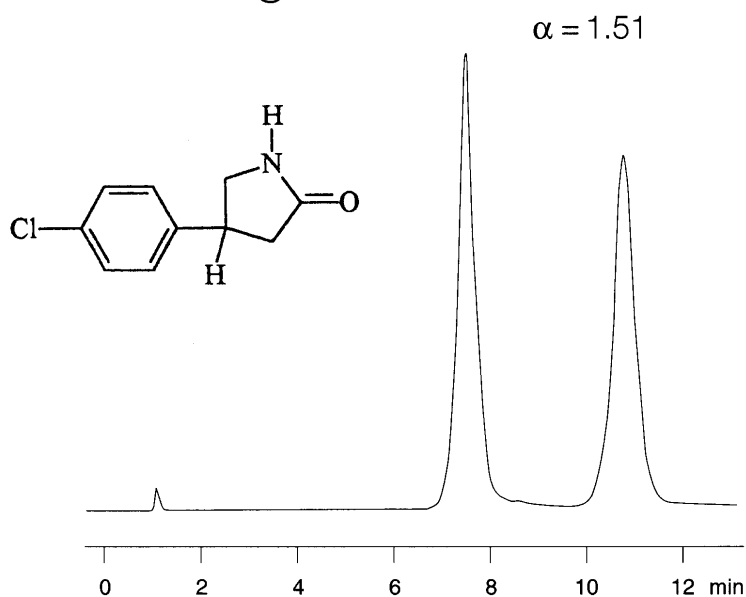
## Kromasil Chiral Separation of Baclophenlactam



App No: 102

### Baclophenlactam

**Phase:** Kromasil CHI-TBB  
**Dimensions:** 1 x 250 mm  
**Order No.:** S-126-1025  
**Mobile Phase:** Hexane-IPA (95:5)  
**Flow Rate:** 50 uL/min  
**Temp.:** 25C  
**Detection:** UV @ 254 nm



### ORDERING INFORMATION: HotSep® Kromasil CHI-TBB 5µ, 100Å

ID	5 cm	10 cm	15 cm	25 cm	Guard	Guard/5pk
1.0 mm	S-126-1005	S-126-1010	S-126-1015	S-126-1025	G-126-10-1	G-126-10-5
0.5 mm	S-126-0505	S-126-0510	S-126-0515	S-126-0525	G-126-05-1	G-126-05-5
0.3 mm	S-126-0305	S-126-0310	S-126-0315	S-126-0325	G-126-03-1	G-126-03-5
0.1 mm	---	---	---	---	---	---
75 µm	---	---	---	---	---	---