

Capillary HPLC:

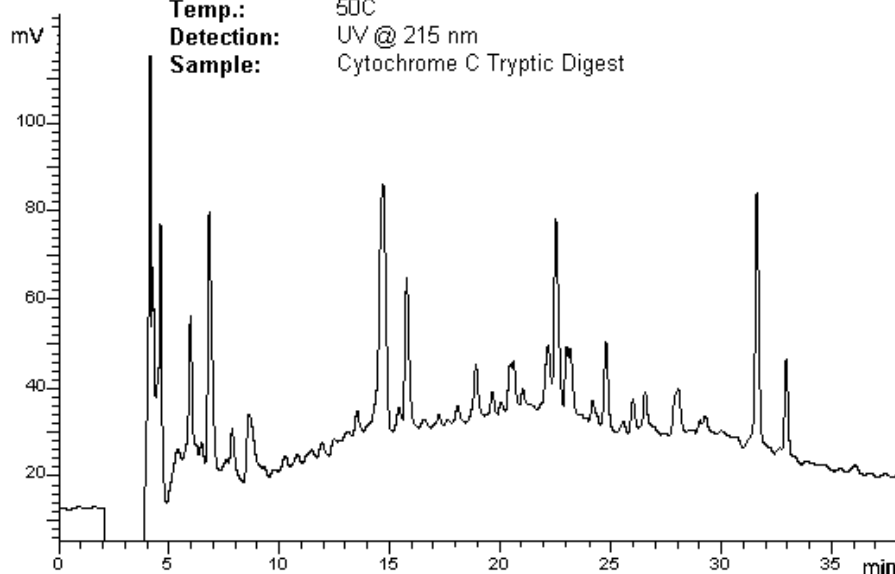
Separation of a Cytochrome C Tryptic Digest



App No: 104

Peptides

Column: 3 μ PLRP-S 300Å
Dimensions: 0.3 x 150 mm
Order No.: S-162-0315
Mobile Phase: A: 0.1% TFA in water
 B: 0.1% TFA in MeCN
Gradient: 8 to 35% B in 40 min, 90% B in 5 min
Flow Rate: 5 μ L/min
Temp.: 50C
Detection: UV @ 215 nm
Sample: Cytochrome C Tryptic Digest



Comments:

Trifluoroacetic acid (TFA) is usually the ion-pairing agent of choice when separating peptides by HPLC-UV.

ORDERING INFORMATION: HotSep® PLRP-S, 3 μ , 300Å

ID	3 cm	5 cm	10 cm	15 cm	Guard	Guard/5pk
1.0 mm	S-162-1003	S-162-1005	S-162-1010	S-162-1015	G-162-10-1	G-162-10-5
0.5 mm	S-162-0503	S-162-0505	S-162-0510	S-162-0515	G-162-05-1	G-162-05-5
0.3 mm	S-162-0303	S-162-0305	S-162-0310	S-162-0315	G-162-03-1	G-162-03-5
0.1 mm	---	---	S-162-0110	S-162-0115	---	---
75 μ m	---	---	S-162-00710	S-162-00715	---	---