

Microbore HPLC-ELSD:

Separation of mono-, di-, and tri-glyceryl stearate (GMS 40)



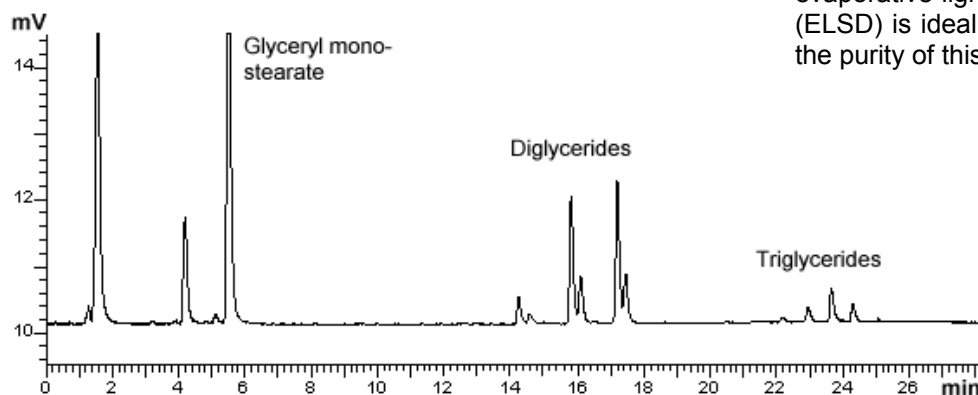
App No 113

Glycerides

Column: 3.5 μ Kromasil C18 100Å
Dimensions: 1 x 150 mm
Order No.: S-111-1015
Mobile Phase: A: MeCN
 B: Ethylacetate
Gradient: 0 to 100% B in 30 mins
Flow Rate: 50 μ L/min
Temp.: 30C
Detector: ELSD
Sample: GMS 40

Comments:

GMS 40 is a technical grade product that contains minimum 40 % glyceryl monostearate. The universal response of the evaporative light-scattering detector (ELSD) is ideal for determination of the purity of this product.



ORDERING INFORMATION: HotSep® Kromasil C18, 3.5 μ , 100Å

ID	5 cm	10 cm	15 cm	25 cm	Guard	Guard/5pk
1.0 mm	S-111-1005	S-111-1010	S-111-1015	S-111-1025	G-111-10-1	G-111-10-5
0.5 mm	S-111-0505	S-111-0510	S-111-0515	S-111-0525	G-111-05-1	G-111-05-5
0.3 mm	S-111-0305	S-111-0310	S-111-0315	S-111-0325	G-111-03-1	G-111-03-5
0.1 mm	---	S-111-0110	S-111-0115	---	---	---
75 μ m	---	S-111-00710	S-111-00715	---	---	---