

Capillary HPLC-ESI-MS: Determination of Rotenone in River Water



Rotenone in River Water (column-switching)

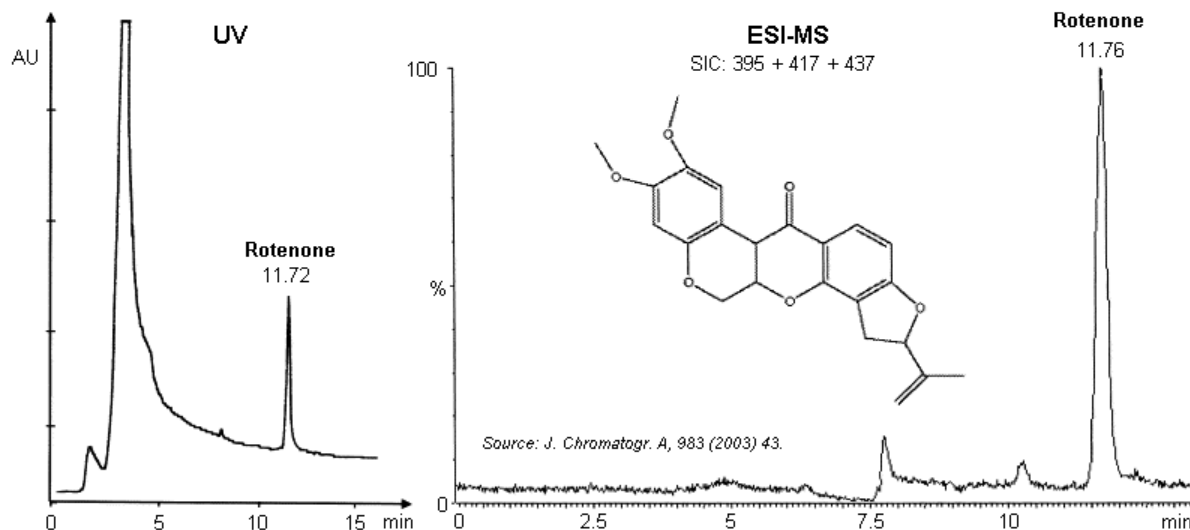
App No 124

Sample Loading:

Pre-Column: 10 μ Kromasil C18 100Å
Dimensions: 0.3 x 30 mm
Order No.: S-181-0303
Mobile Phase: MeCN-water (1:99)
Flow Rate: 70 μ L/min
Inj. volume: 1 mL
Sample: 100 pg/mL rotenone in river water

Separation:

Column: 3.5 μ Kromasil C18 100Å
Dimensions: 0.3 x 150 mm
Order No.: S-111-0315
Mobile Phase: MeCN-water (70:30)
Flow Rate: 5 μ L/min
Temp.: 25C
Detector: UV @ 294 nm and ESI-MS



ORDERING INFORMATION: HotSep® Kromasil C18, 3.5 μ , 100Å

ID	5 cm	10 cm	15 cm	25 cm	Guard	Guard/5pk
1.0 mm	S-111-1005	S-111-1010	S-111-1015	S-111-1025	G-111-10-1	G-111-10-5
0.5 mm	S-111-0505	S-111-0510	S-111-0515	S-111-0525	G-111-05-1	G-111-05-5
0.3 mm	S-111-0305	S-111-0310	S-111-0315	S-111-0325	G-111-03-1	G-111-03-5
0.1 mm	---	S-111-0110	S-111-0115	---	---	---
75 μ m	---	S-111-00710	S-111-00715	---	---	---