

Microbore HPLC:

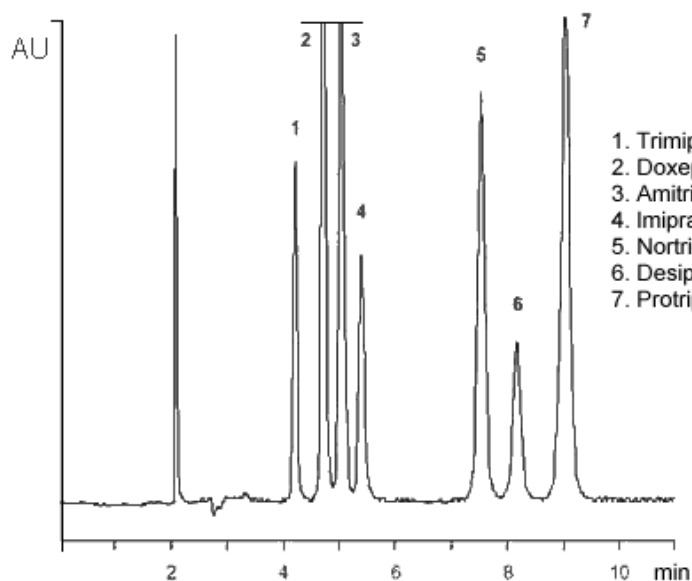
Kromasil CN Separation of Tricyclic Antidepressants



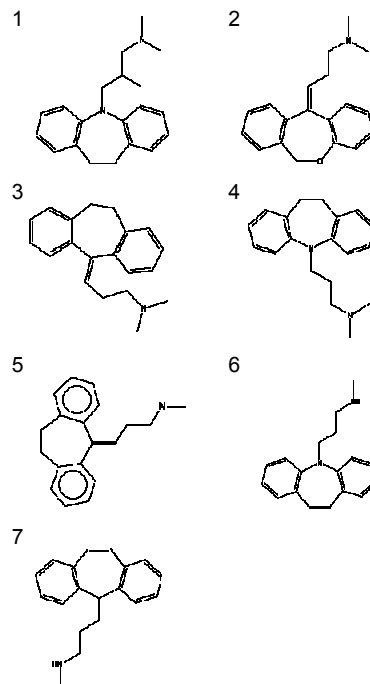
App No 128

Tricyclic Antidepressants

Column: 5µ Kromasil CN 100Å
Dimensions: 1 x 250 mm
Order No.: S-124-1025
Mobile Phase: MeOH-MeCN-25 mM K₂HPO₄, pH 7.1 (17.25:57.75:25)
Flow Rate: 50 µL/min
Temp.: 40C
Detector: UV @ 254 nm



1. Trimipramine
2. Doxepin
3. Amitriptyline
4. Imipramine
5. Nortriptyline
6. Desipramine
7. Protriptyline



ORDERING INFORMATION: HotSep® Kromasil CN (Cyano), 5µ, 100Å

ID	5 cm	10 cm	15 cm	25 cm	Guard	Guard/5pk
1.0 mm	S-124-1005	S-124-1010	S-124-1015	S-124-1025	G-124-10-1	G-124-10-5
0.5 mm	S-124-0505	S-124-0510	S-124-0515	S-124-0525	G-124-05-1	G-124-05-5
0.3 mm	S-124-0305	S-124-0310	S-124-0315	S-124-0325	G-124-03-1	G-124-03-5
0.1 mm	---	---	---	---	---	---
75 µm	---	---	---	---	---	---